



## ILLINOIS STATE BEEKEEPERS' ASSOCIATION

# BULLETIN

March/April 2001 • Volume 83, Number 2

### *PRESIDENT'S MESSAGE*

Hello Beekeepers,

It seems the winter has not been very kind to our bees. I have heard reports of as much as a 75% winter kill. What are we doing wrong? The winter isn't over yet, and the queens should be laying. Check your hives for stores, and feed if you need to. If you are in need of package bees, they might be in short supply this year. I have heard that some suppliers are already sold out. The next nice day be sure and check your colonies for their condition, and get those supers ready.

It will be spring before we know it.

### *MINUTES OF EXECUTIVE BOARD MEETING ON FEBRUARY 10th*

At the ISBA autumn convention in Springfield dues were discussed and because of increases in postage, paper, shipping and publishing costs for the *ISBA Bulletin*, members were in favor of increasing the dues. According to our Constitution and Bylaws: (a) the amount of the annual dues are to be decided upon by the Executive Board, (b) the Executive Board may increase or decrease the amount of the annual dues when it deems this necessary for the betterment of the Association, and (c) the members shall be notified through the Association *Bulletin* of any changes in dues rate. After discussing all the expenses incurred by publishing the *Bulletin*, Steve Mayes motioned that the annual dues be increased to \$6.00 starting with the year 2002. Bill Buckley seconded the motion. Motion passed.

The Illinois State Beekeepers' Association will have its own web site domain name at the suggestion of Carl Wenning. (See article later on in this issue of the *Bulletin* for details.)

The Illinois Products Expo will be held March 9th (Friday P.M. setup) through March 11th in the Illinois Building at the Illinois State Fairgrounds. Tom Elston, Steve Mayes, Ken Beauchamp, and Rich Ramsey volunteered to work the display, giving samples of honey to attendees as well as information, and selling honey and beeswax. Last year approximately 900 persons attended the Exposition. Steve Mayes made a motion that ISBA pay the \$150.00 registration fee. John Hansen seconded the motion. Motion carried. This action had been voted upon at an officer's meeting held at the November Convention. Treasurer Meyer has already paid the fee. Health certificates have also been obtained.

The Executive Board voted to renew their membership in the following organizations: C-Far (Council for Food and Agricultural Research), \$250.00; America Beekeeping Federation, \$75.00; and American Honey Producers Association, \$75.00. The Executive Board also voted to renew the insurance policy covering all State and Chapter activities. The Board voted to change agents which make it more convenient for the Treasurer to take care of insurance business.

Bill Buckley is continuing his work with State officials to remove honey bees from the list of recognized livestock. By defining bees as livestock, some villages are preventing beekeepers from keeping colonies on their property unless they have five acres of land.

Steve Mayes stated that he would like to see stiffer fines imposed on spray operators for killing colonies.

The annual autumn convention of the ISBA will be held on November 10, 2001, at the Illinois State Fairgrounds in Springfield. The gathering will be held in the Agriculture Building, and our host will be the Illinois Department of Agriculture. More information will be announced as it becomes available.

Respectfully submitted,

*Rita Taylor, Secretary*

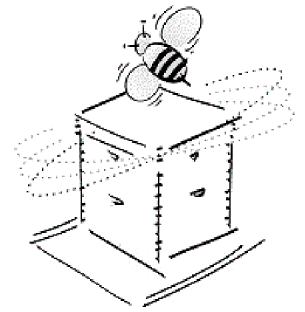
### **NOTE ABOUT LOCAL ASSOCIATION DUES**

At February's Executive Board meeting, the ISBA leadership unanimously agreed that it was time to raise dues for ISBA membership. This increase in dues will take place starting January 1, 2002. Right now the \$2 annual dues payment is completely out of line with the Association's annual operating expenses. The cost for producing the *ISBA Bulletin* during calendar 2000 amounted to \$1,335.80; the cost of postage was \$1,024.56. The combined cost was \$2,360.36. At the same time, membership dues collected for 2000 amounted to only \$1,074 -- less than one-half the total cost of preparing and distributing the *ISBA Bulletin*.

The dues increase for membership in the ISBA will go into effect on January 1, 2002. With the pending rise in ISBA

annual dues from \$2 per member to \$6 per member, local associations affiliated with the ISBA are hereby notified that dues collected for 2002 need to reflect this \$4 increase unless local associations are willing to subsidize ISBA memberships from their own funds.

For instance, the Heart of Illinois Beekeepers' Association members currently pay \$10 annually for membership dues. Of this sum, \$8 goes to HIBA to support that organization, and the remaining \$2 is forwarded to the ISBA for affiliate memberships. Next year HIBA's dues will need to be raised to \$14 in order to pass on the ISBA dues increase. The sum of \$14 is still quite a bargain for membership in two associations. Many social orga-



### **TRI-STATE BEEKEEPERS' MEETING SLATED FOR MARCH 17th**

The Indiana Beekeepers' Association, in conjunction with Cook DuPage, Northwest Indiana, and Southwestern Michigan beekeepers' associations, will present a beekeepers' workshop and conference on Saturday, March 17, 2001, at Hinsdale South High School in Willowbrook (Chicago), Illinois. Hinsdale South High School is located at 7400 South Clarendon Hills Road, Willowbrook, Illinois. Registration fees are \$5 per adult, or \$8 per family. Students may register for only \$2. The following agenda is planned. Should you have any questions, please contact Bill Buckley at 630-654-1867, Ben Blake at 219-462-4889, Paul Johnson at 616-926-6532, or Dave Laney at 219-656-8701. Please note that all times given in the agenda are Central Standard Times.

<b><i>Time</i></b>	<b><i>Program and Speakers</i></b>
7:30 a.m.	Registration
8:30 a.m.	<i>Honey Plants and Pollination</i> - Mr. Mike Kotcher, Forest Glen Nature Preserve, Westville, Illinois
9:15 a.m.	<i>Beekeeping Inspection Report</i> - Mr. Steve Chard, Springfield, Illinois State Chief Apiary Inspector
9:45 a.m.	<i>When Natural Remedies Failed: Development of the Extender Terramycin Patty, and Other Developments</i> - Dr. William Wilson, USDA Retired Scientist, Developer of the Extender Patty
10:45 a.m.	Break - Featuring Special Homemade Goodies
11:00 a.m.	Breakout Sessions
	a. <i>The Inside Story of Scientific Apiary Developments within the USDA</i> - Dr. Wilson.
	b. <i>Bring Your Colonies from Winter into Spring: Spring Management Tips</i> - Mr. Ron Fischer, Oak Park, Illinois
	c. <i>Basic Beekeeping: Getting Started with Bees</i> - Mr. Bob Engel, Hebron, Indiana
Noon	Lunch on Your Own - Restaurant Listing to be Provided at Meeting
1:15 p.m.	Breakout Sessions Continue
	d. <i>A Woodenware Bonanza: How to Build, Maintain, and Get the Most Out of Your Hive Material</i> - Mr. Chuck Lorence, Aurora, Illinois
	e. <i>National Convention Reports and Slide Presentation of Visit to Walter T. Kelley Co.</i> - Mr. Fischer
	f. <i>Basic Beekeeping session continued from 11:00 a.m.</i> - Mr. Engel
2:15 p.m.	Open Forum: Questions and Answers - All Speakers
2:45 p.m.	Auction of 5-10 Items
3:00 p.m.	Meeting Ends

nizations have membership dues equaling \$25 per year or more.

### **CALENDAR OF ISBA EVENTS FOR 2001**

The ISBA Summer Meeting will be held as a joint gathering this year. The meeting, slated as a Friday-Saturday event, will be held June 29-30, at Purdue University, in West Lafayette, Indiana. The meeting is a joint gathering of the Illinois and Indiana State Beekeepers' Associations. There will be a dinner meeting on Friday (tentative), and an all-day session on Saturday. It is not required for any participant to attend the Friday evening session. More details will be made available as soon as they become available. This meeting will be co-hosted by the Cook-DuPage Beekeepers' Association (President Bill Buckley), and Indiana State Beekeepers' Association (President Dave Laney). Watch the ISBA web site for details ([www.isba.ws](http://www.isba.ws)). Information will be posted there immediately after it becomes available. Details will appear later in the *ISBA Bulletin*. The lineup for the rest of the year includes the following:

August 10-19, All Day. Illinois State Fair Honey Show, Illinois Building, Springfield. Honey show display staffed by members of state beekeepers' associations. Hosts sell honey ice cream and honey sticks, monitor commercial and open class displays, and answer questions from the general public. Volunteers needed for all days. Contact Rita Taylor, superintendent of the ISBA honey show, to arrange a day for your association's membership to work the display.

November 10, Saturday, 9:00 a.m. to 4:00 p.m. ISBA Fall Meeting, Illinois Department of Agriculture, State Fairgrounds, Springfield. Hosted by the Executive Council of the Illinois State Beekeepers' Association. The speakers for this event will be announced as the time draws near. The complete tentative agenda will be made available as soon as it is announced.

### ***www.isba.ws* NEW DOMAIN NAME FOR ISBA**

The ISBA is now online with a new web address: [www.isba.ws](http://www.isba.ws). This new and easily remembered domain name replaces [www.phy.ilstu.edu/~wensing/ISBA/ISBA.html](http://www.phy.ilstu.edu/~wensing/ISBA/ISBA.html) which has been in use since November 30, 1998, when the web site was first established. Action and appropriations by the ISBA Executive Board at their meeting on February 10th paved the way for this much needed change. The domain name takes advantage of the new extension .ws which stands for web site.

Other domain names such [www.isba.org](http://www.isba.org), [www.isba.com](http://www.isba.com), and [www.isba.net](http://www.isba.net) were already taken by other groups with

the same initials as our own. Only recently did the extension .ws become available. Log on to [www.isba.ws](http://www.isba.ws) today to see what you've been missing. The web site is updated regularly, and all late-breaking news and special announcements can be found there before they appear in the *ISBA Bulletin* newsletter. In addition, back issue of this newsletter may also be found on the ISBA website in the form of pdf documents. Over the past two years, the web site has been "hit" some 800 times. This is just over one hit per day.

### **4th ANNUAL HIBA BEEKEEPING COURSE A RESOUNDING SUCCESS**

The 4th annual beekeeping course presented by the Heart of Illinois Beekeepers' Association (HIBA) was a resounding success. Held in Bloomington on February 10th, the course was attended by some 75 prospective beekeepers representing 45 households from across Illinois and Missouri. This was the largest workshop in the history of the course, and the numbers continue to increase year after year. Over the life of the series, over 250 individuals from across Illinois and adjoining states have participated in this now annual event. This success story speaks volumes about three things: first, the interest of the general public in beekeeping; second, the need for additional beekeeping courses to be held throughout Illinois; and third, the hard work and ceaseless dedication of the Heart of Illinois Beekeepers in promoting beekeeping.

In attendance at the meeting were Tony Erwin and Harvey Seering from the St. Clair Beekeepers' Association who are considering starting their own beekeeping course in the Belleville, IL, area just east of St. Louis. Also stopping in for a brief period of time were ISBA officers and representative Rich Ramsey, Rita Taylor, Udell Meyer, Steve Mayes, and Ray Chapman who all happened to be in town for an Executive Board meeting.

Beekeeping course director Carl Wenning continues to urge, in the strongest possible terms, the state's beekeeping associations to hold their own beekeeping courses. According to Carl, the need is clearly evident. It is his belief that many more prospective beekeepers would attend such courses if they didn't have to travel so far so early in the morning in order to attend. Carl has written extensively about presenting beekeeping courses, providing copious details and advice for doing so. See Carl's articles in the January, February, and December 2000 issues of *American Bee Journal*, as well as the January 2001 issue. Carl also maintains a web site of beekeeping course resources at <http://www.phy.ilstu.edu/~wensing/bkcourse.html>.

Besides filling a need and increasing the number of the

state's beekeepers, hosting beekeeping courses can provide a significant infusion of needed financial revenues for local beekeeping associations. Each year HIBA generates several hundred dollars in operating revenues for the association, and funds for their Honey Princess / Beekeeping Ambassador program. If you would like to speak with Carl about offering a beekeeping course in your area, feel free to contact him via phone at (309) 454-4164 during the evening (with the exception of Mondays), or via e-mail at [wenning@phy.ilstu.edu](mailto:wenning@phy.ilstu.edu). Nearly everything necessary for presenting successful beekeeping courses across the state of Illinois is in place – public interest, necessary resources, and free advice. The only thing missing is a few dedicated souls willing to put in the time and effort necessary to present a beekeeping course and make a real difference for beekeeping in Illinois.

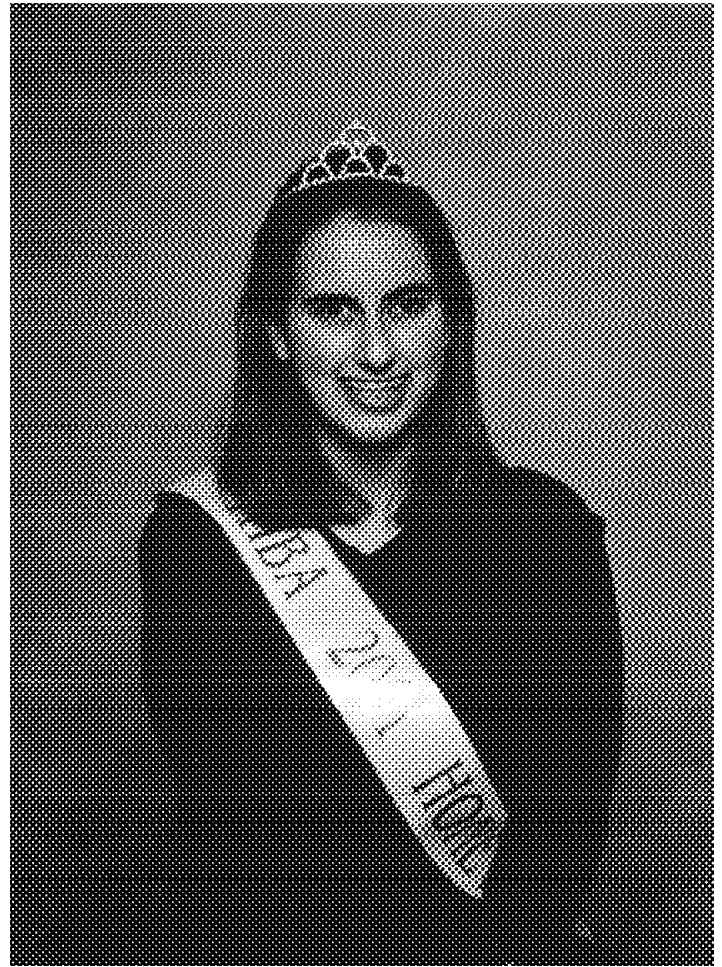
***REBECCA WENNING NAMED  
HIBA 2001 HONEY PRINCESS***

At the October meeting of the Heart of Illinois Beekeepers' Association, Rebecca Wenning was selected to serve as the 2001 HIBA Honey Princess. Rebecca has over the past few years made more than 30 beekeeping presentations to the general public. These experiences should serve her well as she prepares for a year of Honey Princess activities. Her efforts will be focused on promoting honey, honey bees, and beekeeping among the general public.

Rebecca notes, "As usual, I will assist in the preparation and presentation of the HIBA Beekeeping Course in February, and I have already scheduled a talk for the Bloomington Public Library Reading Program later this summer. In March I will give a presentation with my father at Expanding Your Horizons, a one-day program at Illinois State University for girls and teachers who have interest in careers in science and math. I am currently assisting a freshman at University High School who is planning to manage a small observation hive in the school as a biology project. These are my present spring and summer plans, yet I will keep my eyes open for any other opportunities to spread the word about beekeeping."

Rebecca was the subject of four photographs that appeared in the January 2001 issue of *American Bee Journal*. A fifth photo shows a beekeeping display that Rebecca set up at the public library in Normal. The photos were part of the article "Recruiting New Beekeepers" written by her father. Rebecca regularly contributes to the improvement of beekeeping by editing her father's voluminous writings.

Rebecca has prepared a slick, color Honey Princess brochure filled with nine delicious recipes that use honey. In addition, the brochure contains tips for cooking with honey, and tips for storing honey. Printing of the brochure was made possible by the generous contributions of HIBA members, as well



***Rebecca E. Wenning  
2001 HIBA Honey Princess***

as proceeds generated by raffles. If you would like to obtain a copy of Rebecca's brochure, send a self-addressed, stamped (\$0.34) business-size envelope to Rebecca Wenning, 21 Grandview Dr., Normal, IL 61761-4071. Alternatively, you may visit the HIBA website at [www.hiba.ws](http://www.hiba.ws) to obtain the brochure as a pdf document.

Rebecca is the daughter of Carl and Carolyn Wenning. She is 15 years old, and a sophomore at University High School in Normal, Illinois. She is a member of the Heart of Illinois Beekeepers' Association, Illinois State Beekeepers' Association, 4-H, Girl Scouts, Key Club, the Creative Writing Club, and the Bloomington-Normal Youth Symphony. She is also a church lector. Her main hobbies are beekeeping, foreign languages, and travel. She helps her father to maintain 4-6 colonies, speaks Spanish, French, and a smattering of Japanese, and has traveled to both Mexico and Japan using money raised from the sale of honey. Rebecca has been a beekeeper since 1997.

---

**STATELINE ASSOCIATION AFFILIATES WITH ISBA**

The Stateline Beekeepers' Association, located near the Illinois border with Wisconsin, became affiliated with the ISBA during 2000. Welcome to all those northern Illinois beekeepers! This leaves only two of the state's fifteen active beekeeper associations unaffiliated – Central Eastern and Southern Illinois.

There are now 504 dues-paying members of ISBA who are affiliated through their local associations, and 33 who are at-large members. This gives ISBA a total membership of 537 for 2000. Unfortunately, this represents only 47% of the 1,142 registered beekeepers in 2000.

A good number of practical benefits associated with ISBA membership exist but, perhaps, none is more important than the joy of making new friends and meeting with them twice each year at statewide gatherings. Among the many benefits of membership in ISBA are the following:

**Networking:** The ISBA has lots of knowledgeable members. If you have a problem or a question, there are many members to call on for help and/or answers.

**Meetings:** There are two statewide meetings held during the year where experts from all over the U.S. come to speak about their fields of expertise. Local, state, and national news is shared at the meetings.

**ISBA Bulletin:** Members receive a bimonthly newsletter featuring original articles, monthly columns, notices about upcoming events and seminars, and minutes of ISBA board meetings.

**Web Page:** The ISBA maintains a web page ([www.isba.ws](http://www.isba.ws)) where the latest reports and information about Illinois beekeeping are available.

**Reduced Journal Rates:** Members receive 25% discounts on the American Bee Journal, Bee Culture, and The Speedy Bee.

**Program Support:** The ISBA generously supports a number of beekeeping-related events and activities across the state of Illinois.

**Official Representation:** The ISBA is the official voice of beekeeping in Illinois, recently seeking and obtaining an exemption for the use of Coumophos.

**Promotion of Honey:** The ISBA manages the ever popular honey show at the Illinois State Fair where it also sells thousands of cups of honey ice cream each year.

In affiliated beekeeper associations, membership in ISBA is automatic. Nonetheless, independent beekeepers can obtain "at large" membership by submitting \$2 in annual dues for 2001 to the ISBA Secretary. See the back page of this newsletter for contact information.

**PACKAGE BEES AVAILABLE**

James Yoder of Sullivan, IL, is planning to have 2-lb. and 3-lb. package bees available again this year. Bees should be available for pick up around the first part of April. Buckfast, All American, and Harbo bees will be available from B. Weaver of Texas. Golden Italians will be available from Koehnen of California. Bees must be picked up at K. K. Apiaries in Sullivan, IL. Packages will be available at the following rates:

	2#	3#
1-19 packages	\$41	\$51
20-39 packages	\$38	\$46
40-60 packages	\$34	\$43

These prices are with cage exchange. Leave a message on the answering machine at (217) 728-4034, or call James between 7:00 a.m. - 7:30 a.m. Monday through Saturday when someone will be available to answer.

**UPDATING ISBA WEB SITE**

The ISBA web site is regularly updated by webmaster Carl Wenning. Nonetheless, there undoubtedly are changes that are needed from time to time that would serve to make the site more useful. For instance, if your association has set up a web site that you would like to see linked to the ISBA page, then contact Carl. If the contact person for your association has changed, then let Carl know via e-mail at [wenning@phy.ilstu.edu](mailto:wenning@phy.ilstu.edu) or by calling him at (309) 454-4164.

**DEADLINES FOR ISBA BULLETIN SUBMISSIONS**

Submission by the membership of small, newsworthy items is encouraged for inclusion in the *ISBA Bulletin*. If you or your association has information it would like disseminated either through this newsletter or via the ISBA web page, please send it to the newsletter editor. Electronic submissions are preferred (via e-mail to [wenning@phy.ilstu.edu](mailto:wenning@phy.ilstu.edu)), but hard copy is also acceptable. Photographs of either format are also acceptable. Please send image files using TIF format; hard copy should be sent to Carl Wenning at 21 Grandview Drive, Normal, IL 61761-4071.

To ensure inclusion in the *ISBA Bulletin*, deadlines for submission are set as follows: the 15th of the month prior to the two-month block covered by the publication (e.g., April 15th submission deadline for the May/June edition). Articles and images will be accepted after deadlines and included if time and space permits. If you are uncertain about the acceptability of any news item, please contact the editor via e-mail, or call him at (309) 454-4164 (evenings).

---

Membership in the Illinois State Beekeepers' Association is open to all persons interested in bees and beekeeping. Beekeepers are urged to join through their local associations. Dues are \$2.00 per year, **good only January 1st through December 31st each year**, and includes subscription to this newsletter. Beekeeping journals are available at about 25% discount to members as listed below; rates are subject to change without prior notice. **Make checks payable to: Illinois State Beekeepers' Association and mail to: Rita Taylor, Secretary, 4274 Taylor Homestead Road, Pleasant Plains, IL 62677-4024.**

**Please indicate new or renewal subscription when ordering journals.**

**ADDRESS CHANGES:** Send old and new address six weeks prior to date of change when practical to: Rita Taylor, Secretary, 4274 Taylor Homestead Road, Pleasant Plains, IL 62677-4024.

**Reduced Journal Rates (members only)**

	<b>1 Yr.</b>	<b>2 Yr.</b>	<b>3 Yr.</b>
<i>American Bee Journal</i>	\$14.96	\$28.46	\$40.13
<i>Bee Culture</i>	\$16.00	\$31.00	N/A
<i>The Speedy Bee</i>	\$13.25	\$25.25	\$34.00

**ISBA Executive Board 2001**

**President**

Rich Ramsey  
5455 Ramsey Road  
Rochester, IL 62563  
217/498-9374

**Vice President**

John Hansen  
127 N. Madison Ave.  
LaGrange, IL 60525  
708/579-9498

**Secretary**

Rita Taylor  
4274 Taylor Homestead Rd.  
Pleasant Plains, IL 62677-4024  
217/626-1319

**Treasurer**

Udell Meyer  
8844 Trio Lane  
Edwardsville, IL 62025  
618/633-2429

**Directors**

**Northern Region**

William Buckley  
6525 S. Western Ave.  
Clarendon Hills, IL 60514  
630/654-1867

**Central Region**

Steve Mayes  
P. O. Box 274  
Mackinaw, IL 61755  
309/359-8600

**Southern Region**

Ray Chapman  
R.R. 1, Box 215  
Bunker Hill, IL 62014  
618/585-4506

**Editor**

Carl J. Wenning  
21 Grandview Drive  
Normal, IL 61761-4071  
309/454-4164

ILLINOIS STATE BEEKEEPERS' ASSOCIATION NEWSLETTER (USPS 258-600) is published bimonthly at 4274 Taylor Homestead Road, Pleasant Plains, IL 62677-4024. Second Class postage paid at Pleasant Plains, IL. Membership is \$2.00 per year which includes a year subscription to this newsletter. POSTMASTER: Send address changes to Illinois State Beekeepers' Association, 4274 Taylor Homestead Road, Pleasant Plains, IL 62677-4024.



**ILLINOIS STATE BEEKEEPERS' ASSOCIATION**  
Rita Taylor, Secretary  
4274 Taylor Homestead Road  
Pleasant Plains, IL 62677-4024

Second Class  
U.S. POSTAGE PAID  
Permit No. 2  
Pleasant Plains, IL 62677